

Onterra LLC
 Lake Management Planning
 815 Prosper Road
 De Pere, WI 54115
 920.338.8860
www.onterra-eco.com

Sources:
 Roads and Hydro: WDNR
 Bathymetry: WDNR 1975;
 digitized by Onterra
 Aquatic Plants: Onterra, 2025
 Map Date: June 16, 2025 - EJH

Legend

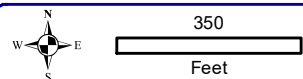
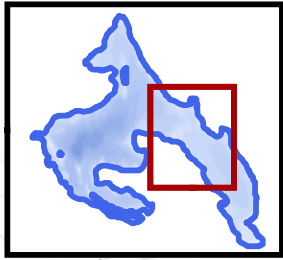
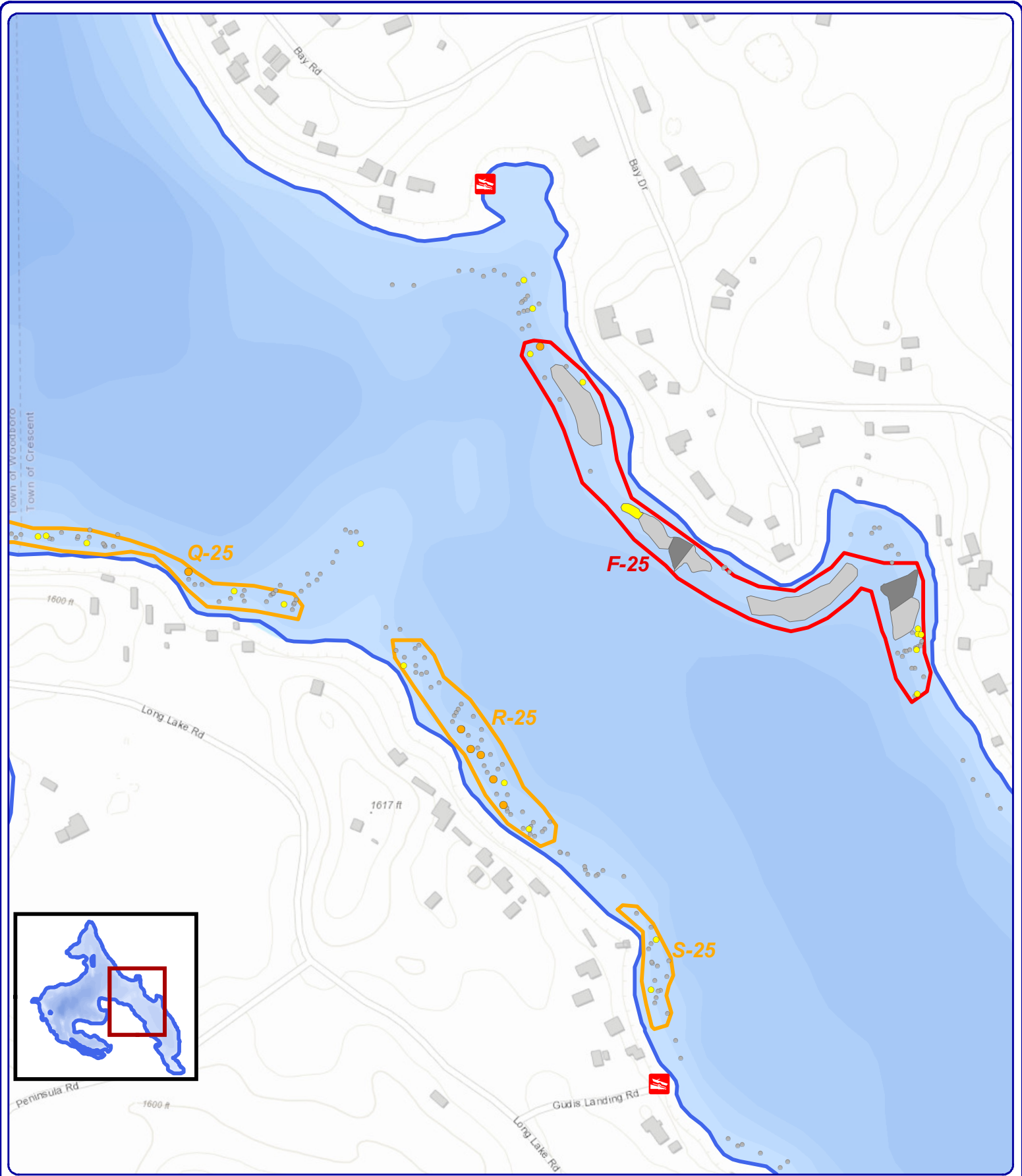
- EWM Survey Date: June 5, 10, 2025**
- Highly Scattered (None)
 - Scattered
 - Dominant (None)
 - Highly Dominant (None)
 - Surface Matting (None)
 - Single or Few Plants
 - Clumps of Plants
 - Small Plant Colony

- 2025 Final Manual Removal Sites**
- 2025 First Priority
 - 2025 Second Priority

Inset Map 1 of 5

Squash Lake
 Oneida County, Wisconsin

**2025 Final EWM
 Removal Priorities**

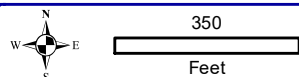
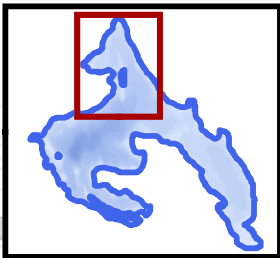
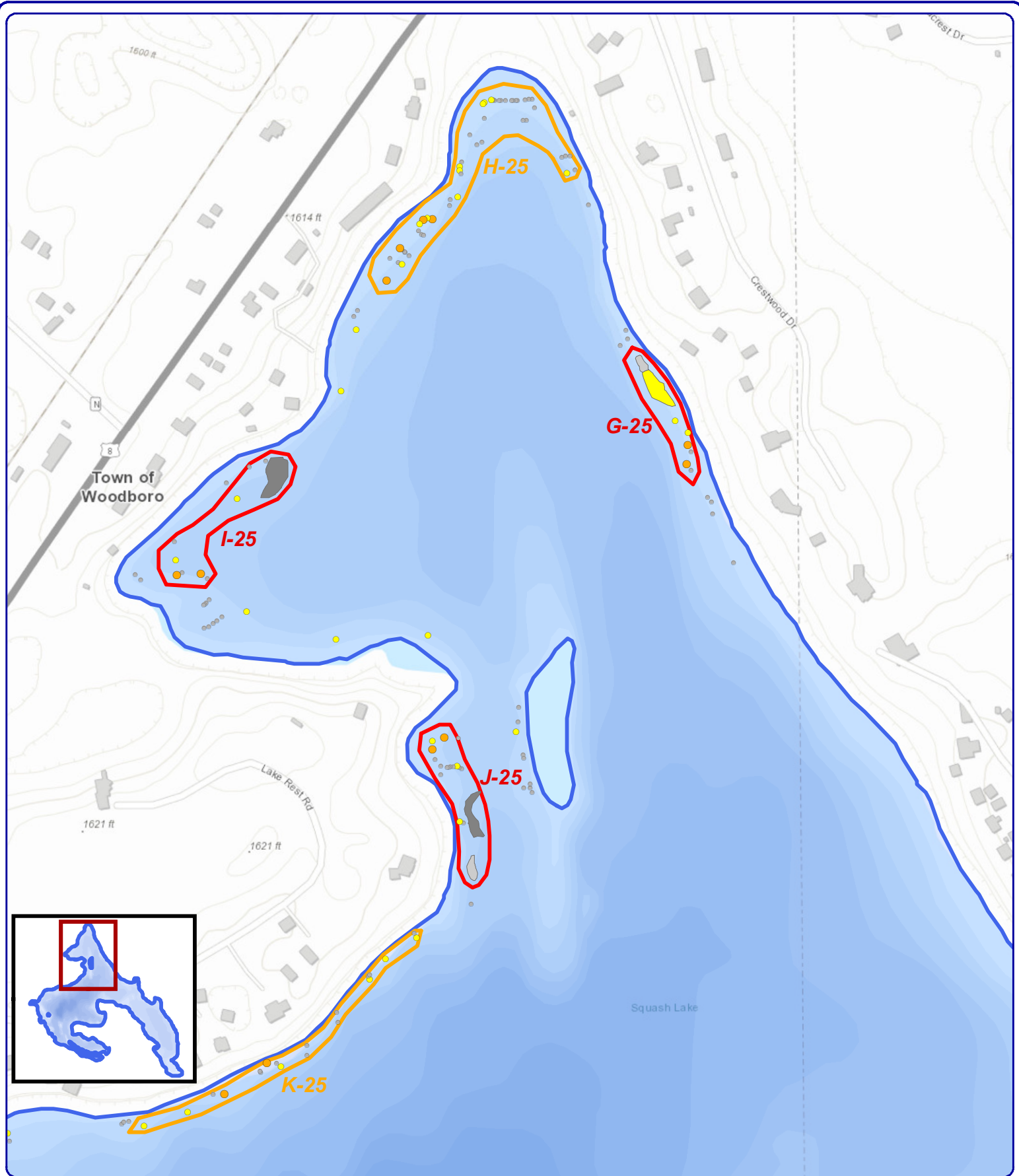


Onterra LLC
 Lake Management Planning
 815 Prosper Road
 De Pere, WI 54115
 920.338.8860
 www.onterra-eco.com

Sources:
 Roads and Hydro: WDNR
 Bathymetry: WDNR 1975;
 digitized by Onterra
 Aquatic Plants: Onterra, 2025
 Map Date: June 16, 2025 - EJH

Legend		2025 Final Manual Removal Sites	
EWM Survey Date: June 5, 10, 2025			
Highly Scattered (None)	Single or Few Plants	2025 First Priority	
Scattered	Clumps of Plants	2025 Second Priority	
Dominant (None)	Small Plant Colony		
Highly Dominant (None)			
Surface Matting (None)			

Inset Map 2 of 5
 Squash Lake
 Oneida County, Wisconsin
**2025 Final EWM
 Removal Priorities**



Onterra LLC
Lake Management Planning
815 Prosper Road
De Pere, WI 54115
920.338.8860
www.onterra-eco.com

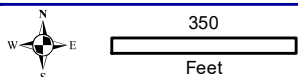
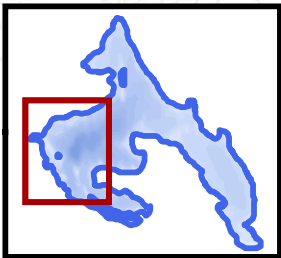
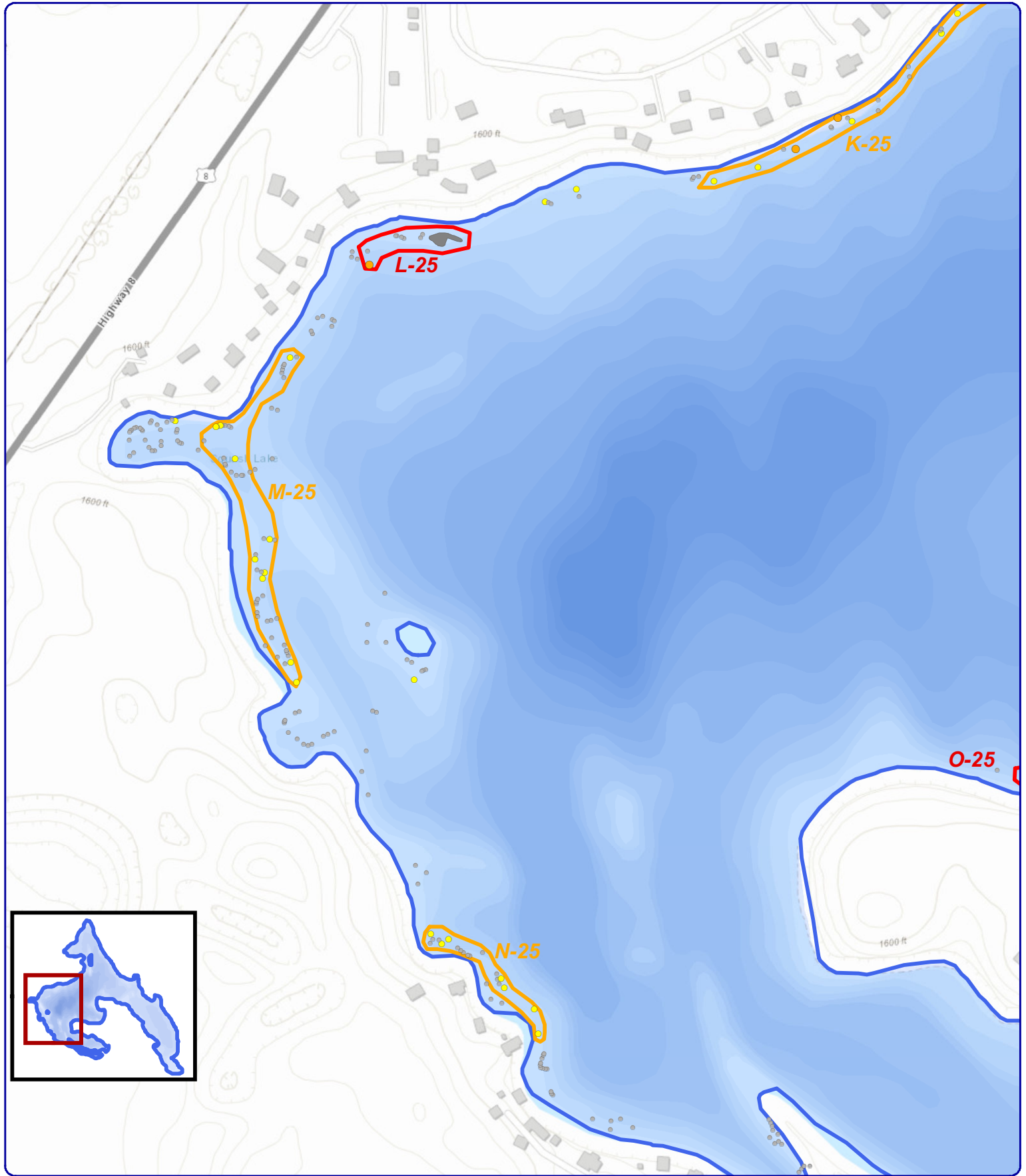
Sources:
Roads and Hydro: WDNR
Bathymetry: WDNR 1975;
digitized by Onterra
Aquatic Plants: Onterra, 2025
Map Date: June 16, 2025 - EJH

Legend

- EWM Survey Date: June 5, 10, 2025**
- Highly Scattered (None)
 - Scattered
 - Dominant (None)
 - Highly Dominant (None)
 - Surface Matting (None)
 - Single or Few Plants
 - Clumps of Plants
 - Small Plant Colony

- 2025 Final Manual Removal Sites**
- 2025 First Priority
 - 2025 Second Priority

Inset Map 3 of 5
Squash Lake
Oneida County, Wisconsin
**2025 Final EWM
Removal Priorities**



Onterra LLC
Lake Management Planning
815 Prosper Road
De Pere, WI 54115
920.338.8860
www.onterra-eco.com

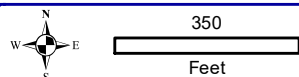
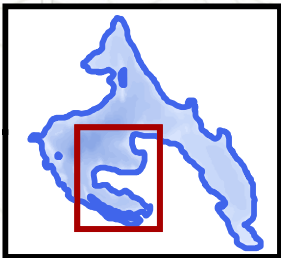
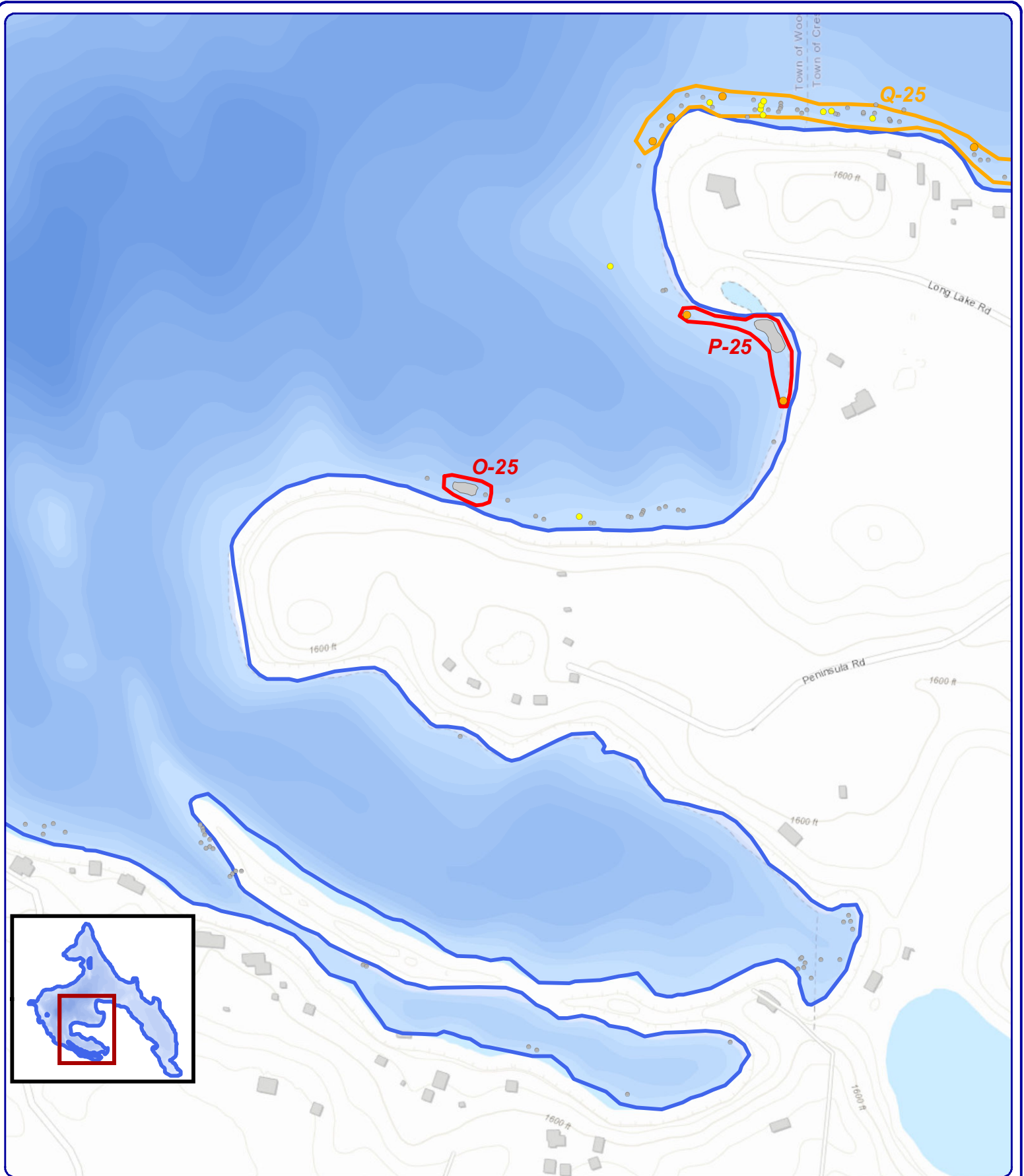
Sources:
Roads and Hydro: WDNR
Bathymetry: WDNR 1975;
digitized by Onterra
Aquatic Plants: Onterra, 2025
Map Date: June 16, 2025 - EJH

Legend

- EWM Survey Date: June 5, 10, 2025**
- Highly Scattered (None)
 - Scattered
 - Dominant (None)
 - Highly Dominant (None)
 - Surface Matting (None)
 - Single or Few Plants
 - Clumps of Plants
 - Small Plant Colony

- 2025 Final Manual Removal Sites**
- 2025 First Priority
 - 2025 Second Priority

Inset Map 4 of 5
Squash Lake
Oneida County, Wisconsin
**2025 Final EWM
Removal Priorities**



Onterra LLC
 Lake Management Planning
 815 Prosper Road
 De Pere, WI 54115
 920.338.8860
 www.onterra-eco.com

Sources:
 Roads and Hydro: WDNR
 Bathymetry: WDNR 1975;
 digitized by Onterra
 Aquatic Plants: Onterra, 2025
 Map Date: June 16, 2025 - EJH

Legend

- EWM Survey Date: June 5, 10, 2025**
- Highly Scattered (None)
 - Scattered
 - Dominant (None)
 - Highly Dominant (None)
 - Surface Matting (None)
 - Single or Few Plants
 - Clumps of Plants
 - Small Plant Colony

- 2025 Final Manual Removal Sites**
- 2025 First Priority
 - 2025 Second Priority

Inset Map 5 of 5

Squash Lake
 Oneida County, Wisconsin

**2025 Final EWM
 Removal Priorities**