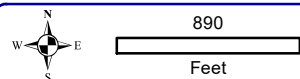


Project Location in Wisconsin



Onterra LLC
 Lake Management Planning
 815 Prosper Road
 De Pere, WI 54115
 920.338.8860
 www.onterra-eco.com

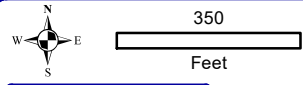
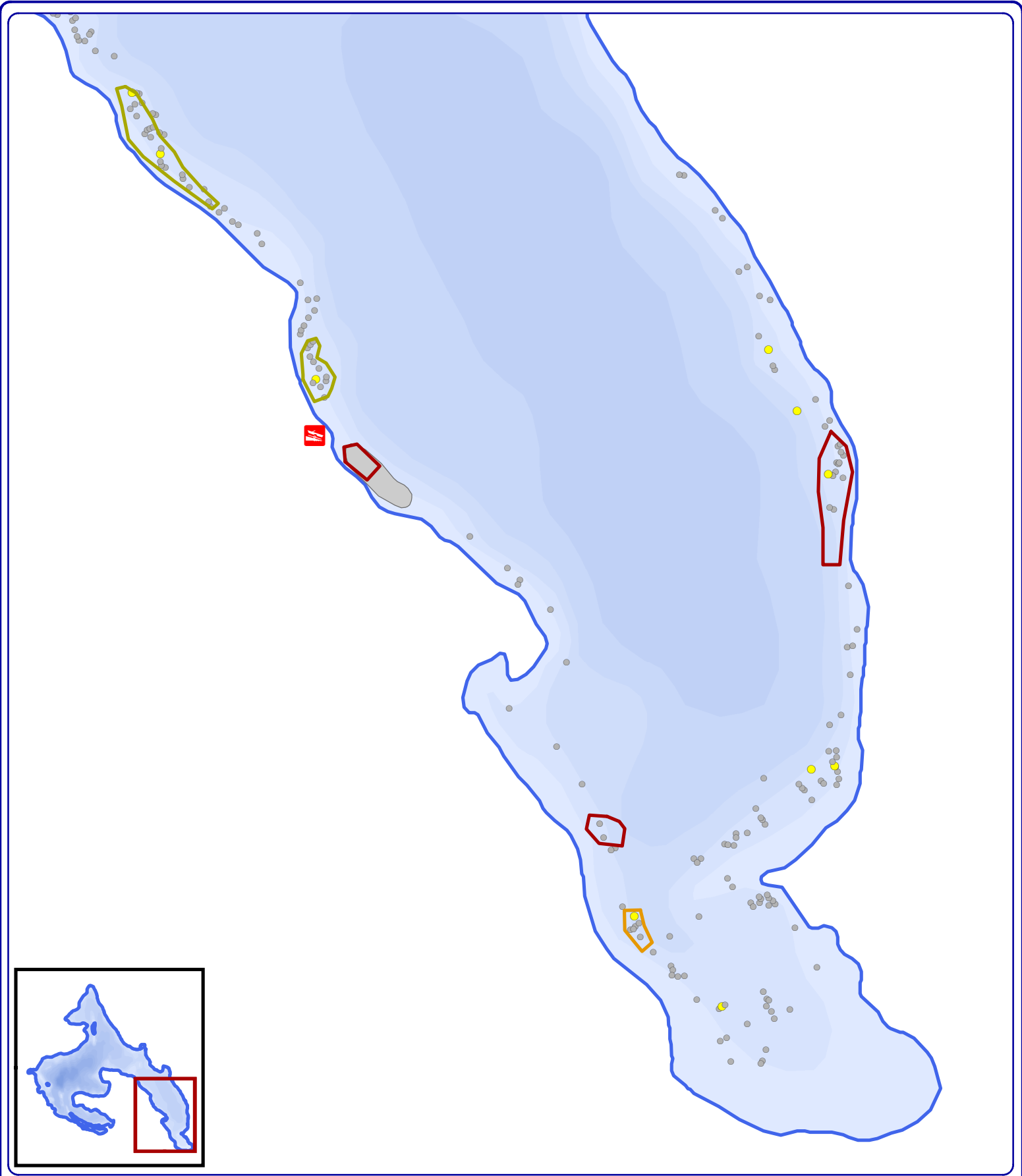
Sources:
 Roads and Hydro: WDNR
 Bathymetry: WDNR 1975;
 digitized by Onterra
 Aquatic Plants: Onterra, 2023
 Map Date: October 4, 2023 JMB

Legend

- EWM Survey Date: September 18, 2023**
- Highly Scattered
 - Scattered
 - Dominant
 - Highly Dominant (None)
 - Surface Matting (None)
 - Single or Few Plants
 - Clumps of Plants
 - Small Plant Colony

- 2023 Hand-Harvest Areas**
- First Priority
 - Second Priority
 - Third Priority

Overview Map
 Squash Lake
 Oneida County, Wisconsin
September 2023
EWM Locations



Onterra LLC
 Lake Management Planning
 815 Prosper Road
 De Pere, WI 54115
 920.338.8860
 www.onterra-eco.com

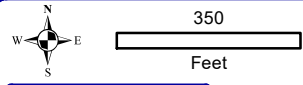
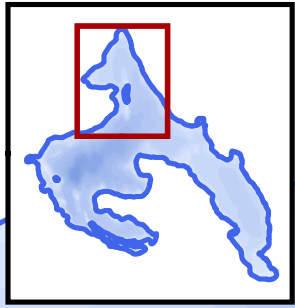
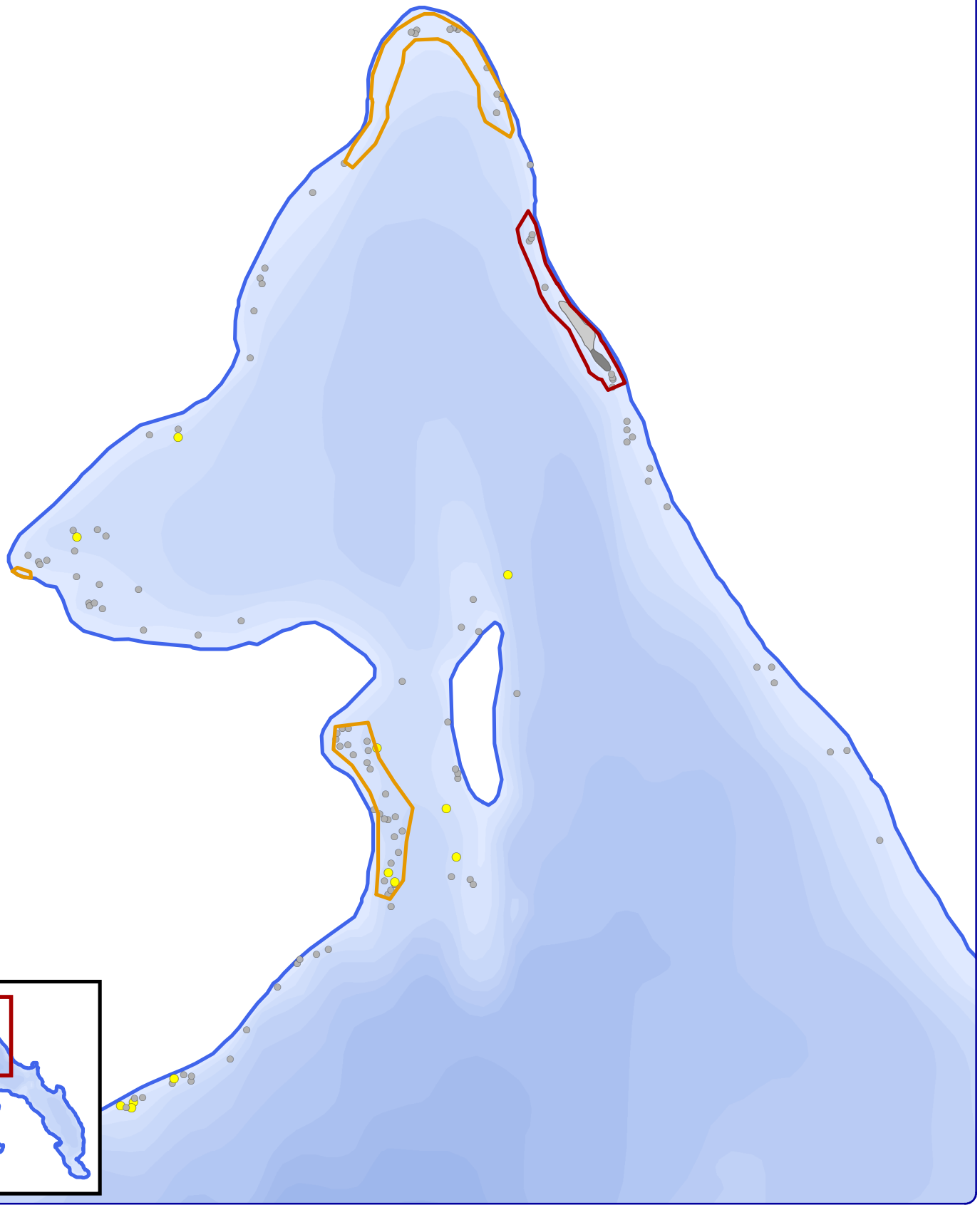
Sources:
 Roads and Hydro: WDNR
 Bathymetry: WDNR 1975;
 digitized by Onterra
 Aquatic Plants: Onterra, 2023
 Map Date: October 4, 2023 JMB

Legend

- EWM Survey Date: September 18, 2023**
- Highly Scattered
 - Scattered
 - Dominant
 - Highly Dominant (None)
 - Surface Matting (None)
 - Single or Few Plants
 - Clumps of Plants
 - Small Plant Colony

- 2023 Hand-Harvest Areas**
- First Priority
 - Second Priority
 - Third Priority

Map 1 of 5
 Squash Lake
 Oneida County, Wisconsin
**September 2023
 EWM Locations**



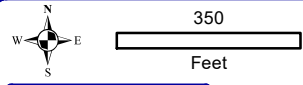
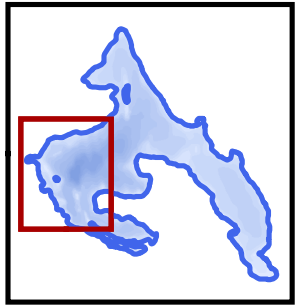
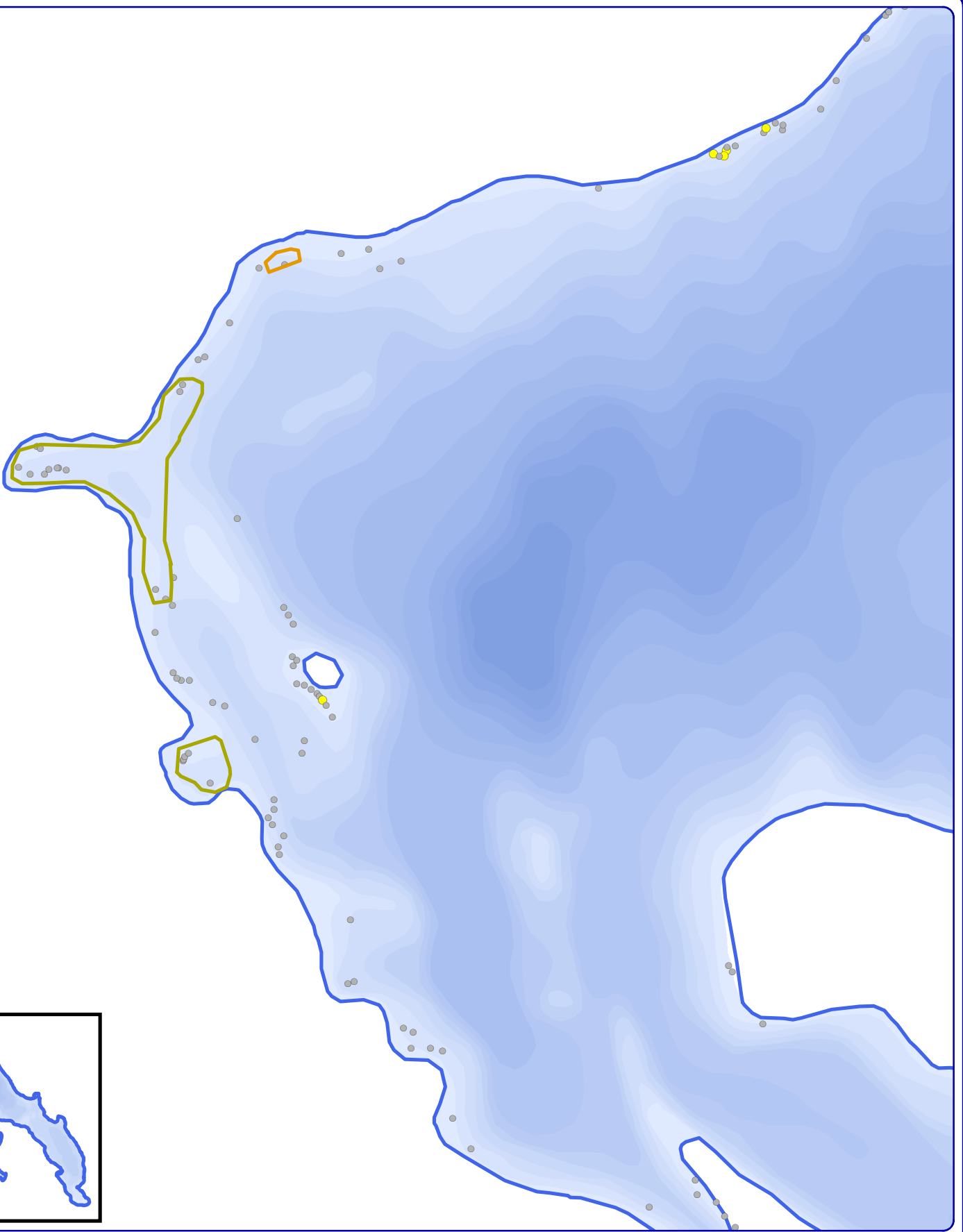
Onterra LLC
 Lake Management Planning
 815 Prosper Road
 De Pere, WI 54115
 920.338.8860
 www.onterra-eco.com

Sources:
 Roads and Hydro: WDNR
 Bathymetry: WDNR 1975;
 digitized by Onterra
 Aquatic Plants: Onterra, 2023
 Map Date: October 4, 2023 JMB

Legend

- | | | | |
|--------------------------------------------|----------------------|--------------------------------|--|
| EWM Survey Date: September 18, 2023 | | 2023 Hand-Harvest Areas | |
| Highly Scattered | Single or Few Plants | First Priority | |
| Scattered | Clumps of Plants | Second Priority | |
| Dominant | Small Plant Colony | Third Priority | |
| Highly Dominant (None) | | | |
| Surface Matting (None) | | | |

Map 2 of 5
 Squash Lake
 Oneida County, Wisconsin
**September 2023
 EWM Locations**



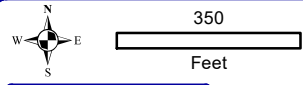
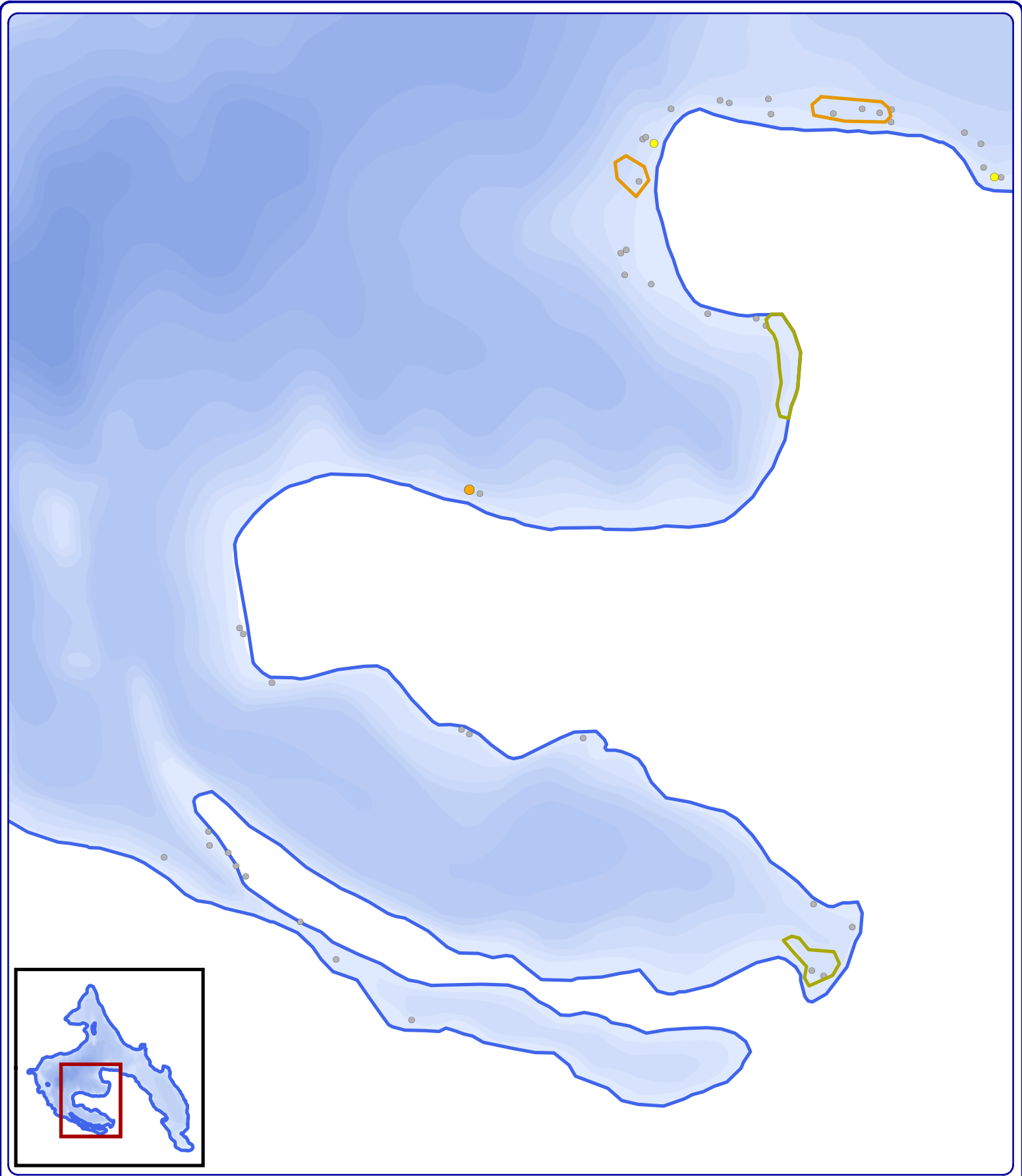
Onterra LLC
 Lake Management Planning
 815 Prosper Road
 De Pere, WI 54115
 920.338.8860
 www.onterra-eco.com

Sources:
 Roads and Hydro: WDNR
 Bathymetry: WDNR 1975;
 digitized by Onterra
 Aquatic Plants: Onterra, 2023
 Map Date: October 4, 2023 JMB

Legend

- | | | | |
|--------------------------------------------|----------------------|--------------------------------|--|
| EWM Survey Date: September 18, 2023 | | 2023 Hand-Harvest Areas | |
| Highly Scattered | Single or Few Plants | First Priority | |
| Scattered | Clumps of Plants | Second Priority | |
| Dominant | Small Plant Colony | Third Priority | |
| Highly Dominant (None) | | | |
| Surface Matting (None) | | | |

Map 3 of 5
 Squash Lake
 Oneida County, Wisconsin
**September 2023
 EWM Locations**



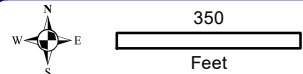
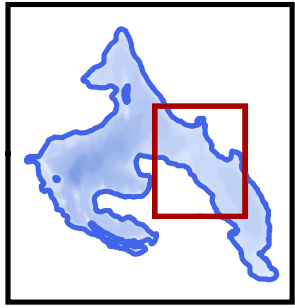
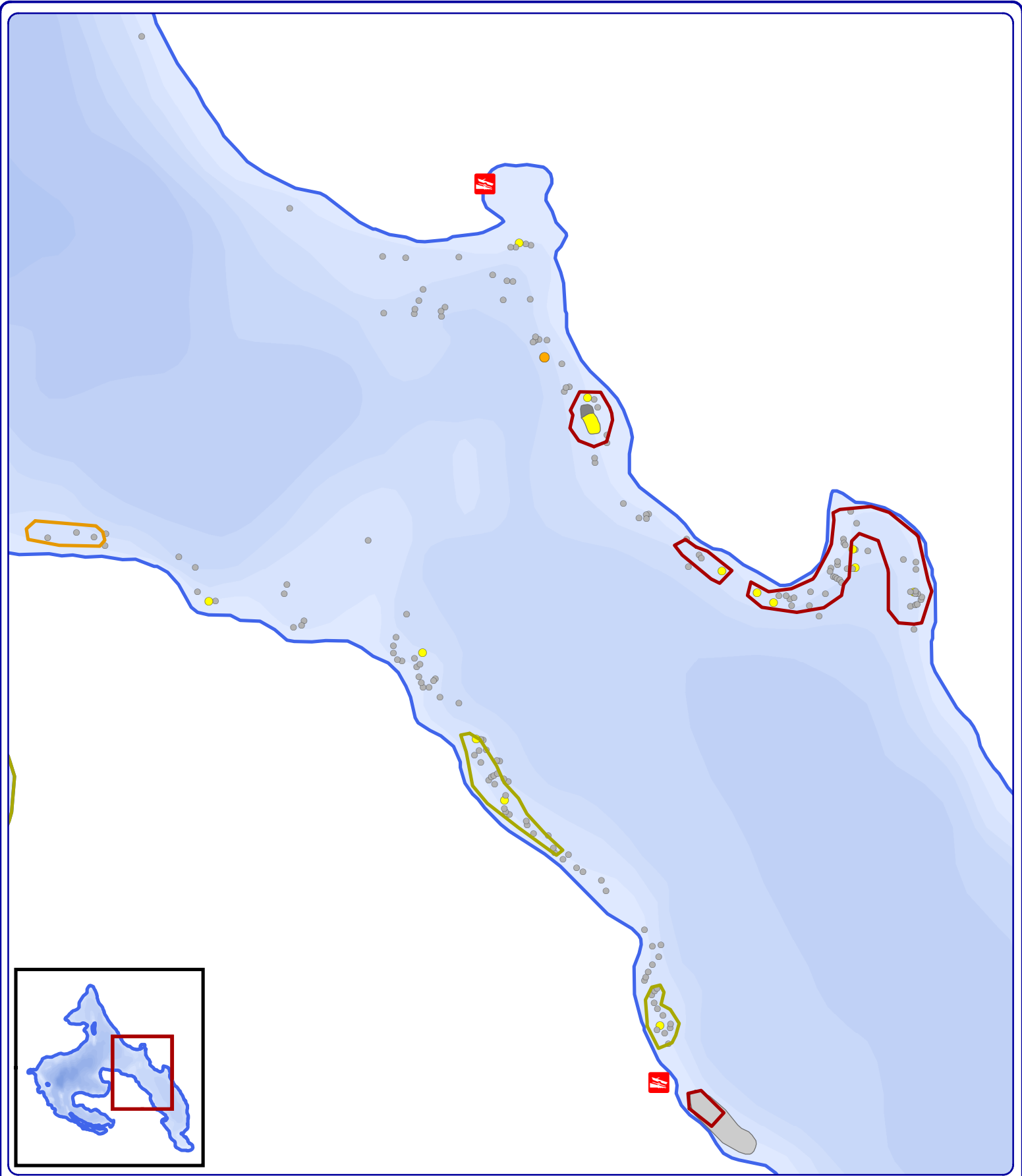
Onterra LLC
 Lake Management Planning
 815 Prosper Road
 De Pere, WI 54115
 920.338.8860
 www.onterra-eco.com

Sources:
 Roads and Hydro: WDNR
 Bathymetry: WDNR 1975;
 digitized by Onterra
 Aquatic Plants: Onterra, 2023
 Map Date: October 4, 2023 JMB

Legend

- | | | | |
|--------------------------------------------|----------------------|--------------------------------|--|
| EWM Survey Date: September 18, 2023 | | 2023 Hand-Harvest Areas | |
| Highly Scattered | Single or Few Plants | First Priority | |
| Scattered | Clumps of Plants | Second Priority | |
| Dominant | Small Plant Colony | Third Priority | |
| Highly Dominant (None) | | | |
| Surface Matting (None) | | | |

Map 4 of 5
 Squash Lake
 Oneida County, Wisconsin
**September 2023
 EWM Locations**



Onterra LLC
 Lake Management Planning
 815 Prosper Road
 De Pere, WI 54115
 920.338.8860
 www.onterra-eco.com

Sources:
 Roads and Hydro: WDNR
 Bathymetry: WDNR 1975;
 digitized by Onterra
 Aquatic Plants: Onterra, 2023
 Map Date: October 4, 2023 JMB

Legend

- | | | | |
|--------------------------------------------|----------------------|--------------------------------|--|
| EWM Survey Date: September 18, 2023 | | 2023 Hand-Harvest Areas | |
| Highly Scattered | Single or Few Plants | First Priority | |
| Scattered | Clumps of Plants | Second Priority | |
| Dominant | Small Plant Colony | Third Priority | |
| Highly Dominant (None) | | | |
| Surface Matting (None) | | | |

Map 5 of 5
 Squash Lake
 Oneida County, Wisconsin
September 2023
EWM Locations